

DAKEWE

Histology product catalogue

Your reliable partner in histology





Catalogue

02-04

Sample identification

SurePrint C100 cassette printer
SurePrint Omni cassette printer
SurePrint S200 slide printer

05

Microtomes

MT1 microtome

06-07

Tissue processors

HP300 tissue processor
HP300 Plus tissue processor

08-09

Cryostats

6250 cryostat microtome
CT520 cryostat microtome

10-11

Staining & coverslipping

DP360 slide stainer
CS500 coverslipper

12-13

Consumables

Cassettes
Microscope slides
Coverslips
Blades



Company profile

Experience reliability and cutting-edge technology when exploring Dakewe's range of histopathology equipment.

Founded in 1999 and headquartered in Shenzhen, China, Dakewe Group has been at the forefront of developing innovative medical technologies. As part of the group, Dakewe Medical specializes in the development and manufacturing of high-quality histopathology instruments. Dakewe Medical infuses state-of-the-art technology into our products, ensuring they meet the highest standards of quality and performance.

Dakewe takes pride in being an ISO 13485 and FDA 510(k) QSR 820 certified manufacturer and supplier, and strives to provide our customers with exceptional service.

Dakewe college of continuing education is a program offering free online seminars to the histology community.

Topics in various fields of pathology and histology are discussed and presented by renowned professionals from multiple countries.

Please visit www.dakewemedical.com for archives and latest news.

SurePrint C100

Cassette printer



With a print speed as fast as 2.5 seconds per cassettes, the printer generates permanent marks that last crisp and dark and resist processing solvents, heat and scratch, providing specimen traceability.

Say farewell to ink cartridges, ribbons, light bulbs and print heads, and also fuzzy maintenance. SurePrint C100 eliminates the costs and downtime associating with these consumables.

Printed cassettes are assorted in the removable output tray, saving time from re-assorting.

SurePrint C100 is able to detect the color of the cassettes and automatically finds the cassettes of the desired color and print on them, allowing for reliable walk-away.

SurePrint C100 is compatible with various Laboratory Information Systems. The templates can be edited flexibly according to the laboratory's requirements and preferences.

Printing technology	Non-contact UV laser marking technology
Print content	Numbers, characters in multiple languages, symbols, 1D/2D barcodes, graphics
Print speed	Up to 2.5 sec/cassette
Cassette type	Without lid, with lid attached; 35° - 45° angle
Air purification	Build-in air purification system
Load capacity	6 hoppers, up to 600 cassettes
Output tray	Up to 100 cassettes in organizer tray
System interface	LIS, HIS, PIC, PACS
Operating systems	Windows 7, Windows 10, Linux, macOS
Power	100 - 240 VAC, 50/60 Hz, 210 VA
Dimensions	420 x 405 x 415 mm
Weight	Approx. 29 kg

SurePrint Omni

Cassette printer



Fast printing, long-lasting marks

Featuring UV laser marking, SurePrint Omni offers great barcode scannability with up to 2,500 dpi high resolution

Continuous output

Special-engineered cassette output rack allows for non-stop printing, never stop the workflow Intuitive handling and viewing of printed cassettes

Omnipotent to print on all sorts of cassettes

Capable to print all regular cassette configurations: Front or back hinged, with or without lid, one-piece or separate

Compact and well-packed

Fits neatly into grossing station
Simple operation with friendly UI, yet powerful to adapt to various lab requirements
Easy integration with various LIS
Rich content including multiple barcode formats

Printing technology	Non-contact UV laser marking technology
Print content	Numbers, characters in multiple languages, symbols, 1D/2D barcodes, graphics
Print speed	Up to 2.5 sec/cassette
Cassette type	Cassettes with/without lid, one-piece cassettes; 35°- 45° angle
Air purification	Build-in air purification system
Load capacity	Up to 80 cassettes in 1 hopper
Output	Continuous output
System interface	LIS, HIS, PIC, PACS
Operating systems	Windows 7, Windows 10, Linux, macOS
Power	100 - 240 VAC, 50/60 Hz, 210 VA
Dimensions	332 x 390 x 440 mm
Weight	Approx. 25 kg

SurePrint S200

Slide printer



Featuring non-contact UV laser marking technology, Dakewe SurePrint S200 slide printer offers fast, rich content and consumable-free printing. The printing is crisp and permanent, resists processing solvents, heat and scratch, reducing errors and enabling traceability.

Upward slide delivery

SurePrint S200 implants upward slide delivery system, where slides are delivered upwards and then horizontally to the printing area, reducing the possibility of slide fragmentation.

Dual input, dual output

With two loading hoppers, SurePrint S200 can store two types of slides separately. 200-slide loading capacity offers relief from repetitive reloading. Upper slot for on-demand printing and lower hopper for batch printing, accommodating your laboratory routine.

Fit seamlessly into your current workflow

Compatible with most of slides with paint coated tab. Send printing command from the built-in software, PC software or integrated LIS. Triple-layer filters in the air purification system keep odor and dust away from operator.

Printing technology	Non-contact UV laser marking technology
Print content	Alphanumeric, multiple languages, symbols, 1D & 2D codes, graphics
Print mode	On-demand and batch printing
Loading capacity	2 hoppers, up to 100 slides in each
Output hopper capacity	Up to 50 slides
Print speed	Up to 5 seconds/slide
Air purification	Built-in air purification system
System interface	LIS, HIS, PIS, PACS
Printer interface	USB and Ethernet
Power requirements	AC 100 – 240 V, 50/60Hz, 210 VA
Dimensions (WxDxH)	240 x 440 x 450 mm
Weight	Approx. 32.5 kg
Operating systems	Windows 7, Windows 10, Windows 11, Linux, macOS

MT1

Microtome



Dakewe MT1 semi-automated rotary microtome offers quality sections and effortless experience with engineered mechanism and ergonomic design, adapting to the need of every microtomists in the laboratory.

Precision oriented

± 8° X/Y orientation with clear graduation enables fast alignment of the specimens

Patented 0 position indicator with pleasant motion feedback

Position memory function brings specimen head to desired position in one touch

Adapt to users

Rocking mode allows trimming without a full rotation of handwheel, reducing fatigue

3-in-1 coarse feed wheel with reversible wheel direction adapts to the microtomists' preference

2-in-1 blade holder for high and low profile blades

Ergonomics infused

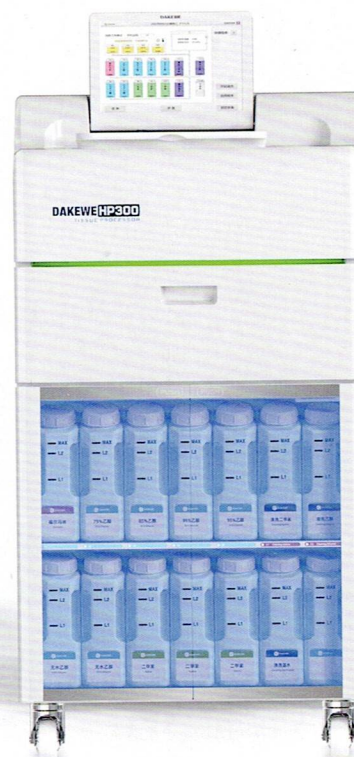
Smooth-running and light hand wheel thanks to expertly designed force balance system

Large volume, removable waste tray with slope interior for effortless cleaning

Power	100 - 240 VAC, 50/60 Hz
Maximum consumption	50 VA
Dimension (WxDxH)	490 x 570 x 306 mm
Weight	Approx. 38 kg
Screen	5 inch color touch screen
Control panel	Yes
Waste tray	2000 mL volume, antistatic
Section thickness range	0.5 - 100 µm
Setting values	For 0.5 - 5 µm in 0.5 µm increments For 5 - 20 µm in 1 µm increments For 20 - 60 µm in 5 µm increments For 60 - 100 µm in 10 µm increments
Trimming thickness range	1 - 600 µm
Setting values	For 1 - 10 µm in 1 µm increments For 10 - 20 µm in 2 µm increments For 20 - 50 µm in 5 µm increments For 50 - 100 µm in 10 µm increments For 100 - 600 µm in 50 µm increments

HP300

Tissue processor



Diagnostic functions

Automatically check key parameters upon startup and before the process starts, minimizing the possibility of malfunction from the beginning

Electric lock

Simply click on the screen to lock and unlock the retort, easy to operate and guarantee good sealing

Ceramic rotary valve

Heat-resistant ceramic valve reduces blockage caused by wax attachment and thus promotes the stability and accuracy of liquid delivery

Back-lit reagent cabinet

See reagent state clearly

Multi-dimensional RMS

Multi-dimensional monitoring of reagent usage, reagent replenishment record can be generated and exported

Power requirements	100 - 120 VAC, 60 Hz or 220-240 VAC, 50 Hz; 1200 VA
Dimensions (W×D×H)	620 × 640 × 1170 mm
Weight (without reagents)	Approx. 180 kg, without reagents
Retort capacity	Up to 300 cassettes in 2 large baskets, or 280 in 4 small baskets
Wax tanks	3 × 4.2 L, 1 × 5.6 L
Reagent bottles	10 reagent bottles, 3 cleaning reagent bottles, 1 condensate bottle
Program memory	Up to 100 protocols
Screen	12.1 inch LCD color touch screen, 3 angles adjustable
Advanced infiltration	Vacuum and pressure options, with effective agitation

HP300 Plus

Tissue processor



Dual air pump system

The two air pumps can work individually or jointly to ensure instrument accountability

Ultrasonic sensors

3 ultrasonic sensors in the retort unaffected by wax build-ups are able to provide correct liquid level information consistently

Concentration measurement

On-board high precision sensor measures alcohol concentration to ensure only correct reagents are used

Reagent bottle identification

Reagent Bottle Intelligent Identification System (RBIIS) modules built in every reagent bottle enable auto reagent information extraction and position detection to streamline reagent management

Remote fill and drain

Replenish reagents via the dedicated ports

Power requirements	100 - 120 VAC, 60 Hz or 220-240 VAC, 50 Hz, 1200 VA
Dimensions (WxDxH)	620 x 640 x 1170 mm
Weight	Approx. 180 kg, without reagents
Retort capacity	Up to 300 cassettes in 2 large baskets, or 280 in 4 small baskets
Wax tanks	3 x 4.2 L, 1 x 5.6 L
Reagent bottles	10 reagent bottles, 3 cleaning reagent bottles, 1 condensate bottle
Program memory	Up to 100 protocols
Screen	12.1 inch LCD color touch screen, 3 angles adjustable
Advanced infiltration	Vacuum and pressure options, with effective agitation
Concentration measure	Yes
Reagent preheating	Yes
Reagent bottle identification	Yes
Remote fill/drain	Yes

6250

Cryostat microtome



Exquisite mechanisms

Driven by precise motors and durable guide rails, Dakewe 6250 cryostat produces uniform section continuously and fears not heavy workload. works smoothly when sectioning different kinds of tissues, hard or soft, large or small.

Stable blade hold

The high-quality blade holder adapts to both high and low profile blades and has an arc design to minimize blade trembling.

All crucial information at a glance

The large color touch screen allows for the display of important parameters and toggles. A side control panel is present for convenient operation.

Schedule to fit your schedule

UV disinfection and defrosting can be activated as scheduled or manually to synchronize with the laboratory's routine.

Power requirements

220 - 240 VAC, 50Hz, 1400 VA
220 - 230 VAC, 60Hz, 1400 VA
110 -127 VAC, 60Hz, 1200 VA

Dimensions (WxDxH)

780 x 700 x 1280 mm, including handwheel

Weight

Approx. 120 kg

Section thickness range

1 - 100 μ m

Trimming thickness range

1 - 600 μ m

Horizontal feed

25 \pm 1 mm

Vertical stroke

59 \pm 0.5 mm

Retraction

0 - 200 μ m, adjustable

Coarse feed

300 μ m/s , 900 μ m/s

Cryochamber temperature

-35°C to 40°C

Freezing stations

18 , minimum temperature
-40°C (\pm 5°C)

Peltier elements

2, minimum temperature -60°C

CT520

Cryostat microtome



Powerful cooling

The powerful double compressors and multiple sets of temperature sensors ensure precise temperature control and fast, smooth cooling.

Separate temperature setting on specimen head, freeze shelf, and blade holder is now possible.

Reach target temperature from room temperature in down to 1.5 hours.

Precision driven

Semi-motorized microtome located outside the cryochamber further improves reliability and precision, and provides for quality sections.

Smooth and durable dual rail effortlessly handles heavy sectioning demand. Explicit specimen feeding driven by precise stepper motors produces homogeneous sections.

Ergonomic design

Blade holder adapts to high and low profile blades.

Sensor light with adjustable brightness allows for clear view and prevents eye fatigue.

Scheduleable UV disinfection and nano-silver coating protects health

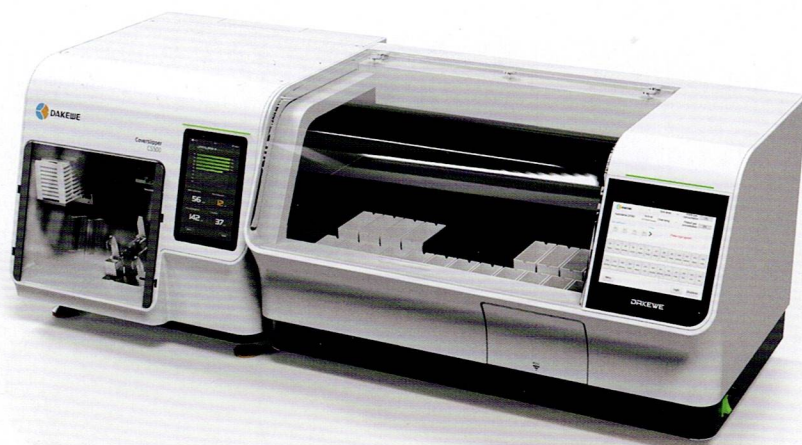
Power requirements	220 - 240 VAC, 50 Hz; 220 - 230 VAC, 60 Hz; 110 - 127 VAC, 60 Hz
Dimensions (WxDxH)	830 x 910 x 1300 mm, including handwheel
Weight	Approx. 185 kg (without accessories)
Section thickness range	1 - 100 μ m
Trimming thickness range	5 - 600 μ m
Horizontal feed	30 \pm 1 mm
Vertical stroke	62 \pm 1 mm
Retraction	0 - 100 μ m, adjustable
Coarse feed	900 μ m/s, 1800 μ m/s
Specimen orientation	\pm 8° (x/y axis), 360° (z axis)
Temperature range	At ambient temperature of 20°C Freeze shelf: -10°C to -42°C \pm 5°C Specimen head: -10°C to -50°C \pm 5°C Blade holder: -15°C to -30°C \pm 5°C
Freezing stations	18
Peltier elements	-60°C + 3°C (at freeze shelf temperature of -42°C (+5°C))

DP360

Slide stainer

CS500

Coverslipper



Staining & coverslipping

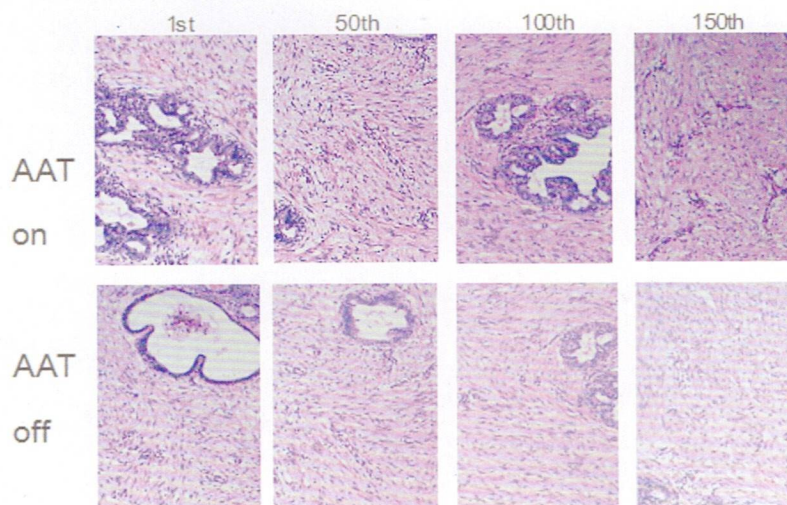
The DP360 slide stainer + CS500 coverslipper workstation provides an effective, walk away solution with consistent staining quality and traceability.

• DP360 slide stainer

An open system, linear fully automated slide stainer offering satisfying and consistent quality with smart management and great flexibility to accommodate work requirements

AAT consistent staining support

Unique Automatic adjustment technology (AAT) automatically extends staining time in each step to accommodate reagent dilution offer consistent result over time



Reagent management

Record reagent usage in cycles or days, generate and export reports for laboratory financial audits
Color indicator prompts reagent replenishment

High throughput

Form a workstation with CS500 without extra connector
Fastest movement up to 1 m/s provide precise differentiation time control and save run time
Programmable movements to reduce cross-contamination

Safety features

Exclusive air purification system with fume concentration detect activates fan when the fume level exceeds threshold automatically
Operation will stop if the hood is open, protecting the user and the instrument

• CS500 coverslipper

Accept a variety of racks
Output tray can be used as the slide tray for examining, saving time and effort from re-sorting the slides
The whole coverslip process is recorded for trace and track
Stable medium extrusion and broken coverslip detect
the nozzle is placing in solvents automatically to prevent clogging

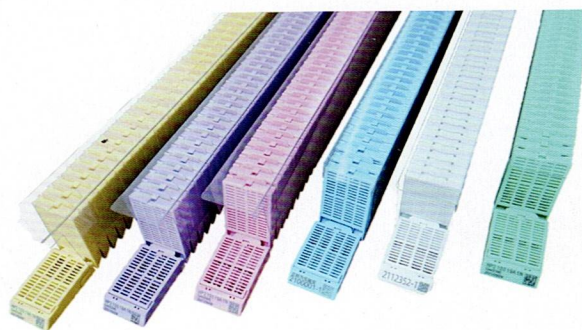
DP360

Dimensions (WxDxH)	1066 x 700 x 630 mm
Weight	Approx. 130 kg
Power consumption	1200 VA
Supply voltage/frequency	100 - 240 VAC 50/60 Hz
Operating temperature range	+15°C to +40°C
Total stations	26
Oven	1, Max temperature 75°C
Reagent heating	4, Max temperature 38°C
Washing station	4
Reservoir volume	480 ± 20 ml
Program storage capacity	≥ 100 programs
Slide rack capacity	30 slides

CS500

Dimensions (WxDxH)	660 x 770 x 640 mm
Weight	Approx. 90 kg
Power consumption	180 VA
Supply voltage/frequency	100 - 240 VAC 50/60 Hz
Output capacity	90 slides
Coverslip magazine capacity	200 coverslips
Mounting media bottle capacity	250 ml
Coverslip size	(24-25) x 50 mm

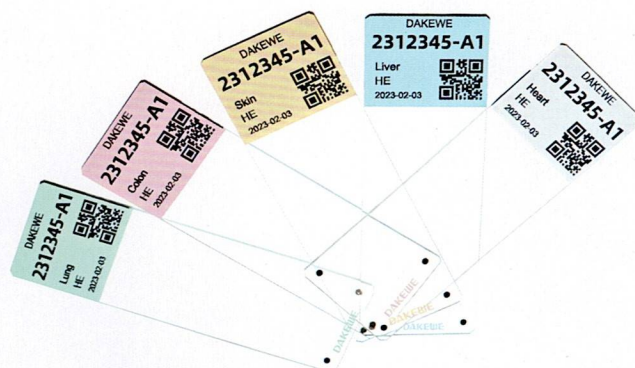
Cassettes



Dakewe's HistoFlo cassettes are engineered to optimize print quality when used with laser cassette printers from Dakewe. The cassettes allow efficient processing and specimen safety. HistoFlo cassettes are made of P.O.M materials and resistant to common processing chemicals and heat.

For models and details available, please contact your Dakewe sales representative.

Microscope slides



Code	Name	Dimensions	Paint tab color	Description	Packaging
7109030A	Dakewe HistoFlo microscope slides	25 x 75 mm. thickness: 1.0 - 1.2 mm	Available in 5 colors: White / Pink / Yellow / Blue / Green	Float glass. Ideal for laser slide printers.	50 pcs / box. 50 boxes / carton
DKWAS001A	Dakewe HistoFlo adhesion microscope slides	25 x 75 mm. thickness: 1.0 - 1.2 mm	Available in 5 colors: White / Pink / Yellow / Blue / Green	Float glass. Ideal for laser slide printers. Special coating to improve tissue adherence.	50 pcs / box. 50 boxes / carton
7109040A	Dakewe HistoFlo Etching microscope slides	25 x 75 mm. thickness: 1.0 - 1.2 mm	Available in 5 colors: White / Pink / Yellow / Blue / Green	Float glass. Ideal for laser slide printers. Dark color applied to the back of slide for improved printing results.	50 pcs / box. 50 boxes / carton

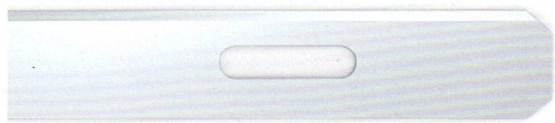
For models available and details, please contact your Dakewe sales representative.

Coverslips



Name	Dimensions	Description	Packaging
Dakewe HistoFlo microscope cover glass	24 x 50 mm, thickness: 0.13 - 0.16 mm	Borosilicate glass. Suitable for the use on coverslippers with treated surface to avoid sticking.	100 pcs / pack. 10 packs / box. 10 boxes / carton

Blades



Advanced plasma surface technology and stainless steel material of the blades offer impressive sharpness and durability. The blades are suitable for rotary microtomes, sliding microtomes, cryostat microtomes and research microtomes in pathology or research laboratories.

For more details, please contact your Dakewe sales representative.

Ver 1.0, Jan 2024

DAKEWE

Dakewe (Shenzhen) medical equipment Co., Ltd.
Floor 5, Bld B, 2 Luhui Rd, Kengzi, Shenzhen, China
+86 755 2640 5921
www.dakewemedical.com
enquiry@dakewe.com



#DakeweMedical